

# Fast Check MT

## Fully Fiber Endface Inspector



With the global wave of artificial intelligence and digital reality technology, the optical communication industry is ushering in explosive growth. Facing the fast-growing 800G, 1.6T optical module, MPO connector and high-density connector markets, the efficiency and accuracy of end face inspection have become a key bottleneck in increasing production capacity. Dimension Technology has launched a new FastCheck MT Fully Fiber Endface Inspector, which is designed for multi-core optical modules and high-density connectors. Relying on large-field imaging technology, the high-definition capture and intelligent analysis of all optical fiber end faces can be completed at once, completely saying goodbye to the era of core-by-core detection. The equipment integrates the three core functions of automatic focusing, automatic finding center, and automatic Pass/Fail analysis, greatly reducing the operating threshold and time cost. The test results generate a visual report in real time, and the images and data are automatically saved to realize the digital management of quality traceability. Faster, more accurate, and smarter, Dimension technology helps companies efficiently meet production capacity challenges and accelerate their progress towards a new stage of high-end manufacturing of optical communications.

### Key Features

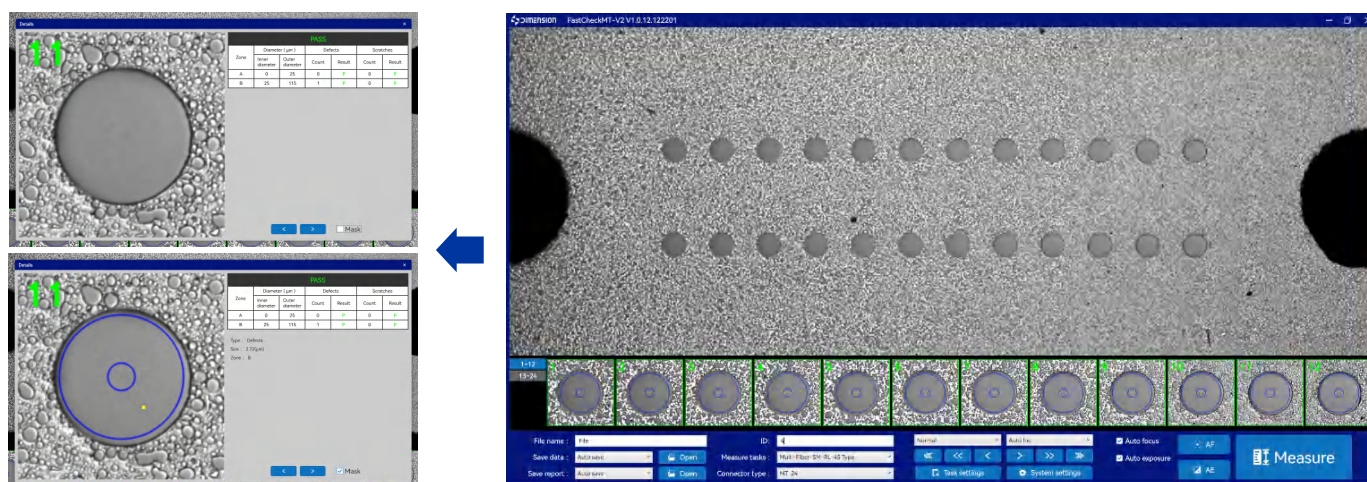
- One-time inspection of all end faces of multi-core
- Efficient measurement greatly improves production line efficiency
- Fully compatible with multi-core connectors and module testing
- Operation-friendly and intuitive reporting

### Main Application

- It is suitable for end-face inspection of high-speed optical modules such as 400G/800G/1.6T .
- Covering the production and manufacturing inspection of MT/MPO/MMC and other multi-core connectors

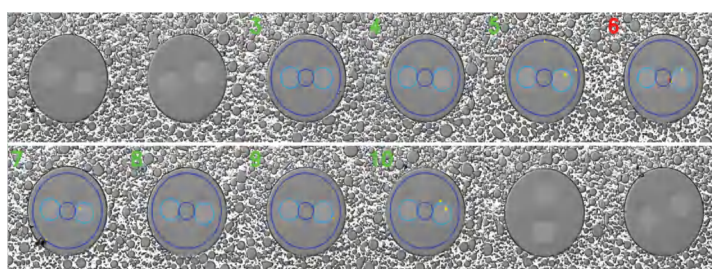
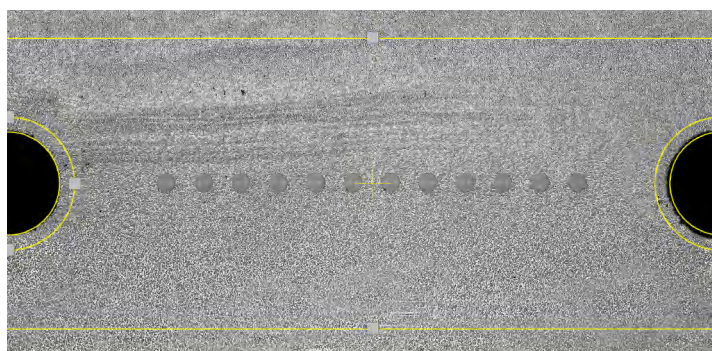
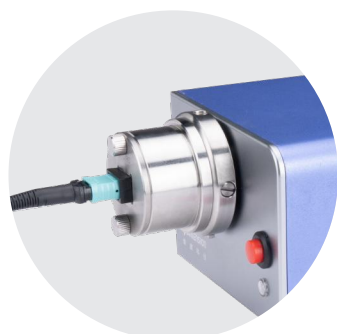
## Accurate inspection of all end-faces One-click release of production capacity

FastCheck MT Fully Fiber Endface Inspector efficiently meets capacity challenges with innovative technology. It adopts a large-field camera and high-precision optical system to realize one-time full-end face imaging and detection of multi-core connector end faces, and integrates fully automatic intelligent detection algorithms to greatly shorten the inspection time. The equipment automatically focuses, automatically finds centering, automatically exposes and automatically measures, greatly reducing the dependence on manpower and operating errors, ensuring accurate and reliable detection while helping the rapid release of production capacity.



## One machine can handle multi-scenario detection

FastCheck MT is fully compatible with 400G/800G/1.6T and other optical modules, as well as various multi-core connectors such as MT/M-PO/MMC, and can set measurement standards and perform measurement tasks such as polarization-maintaining fibers and false fibers, and flexibly adapt to the diversified testing of production lines.





## Intuitive operation and Professional reports in one hand

FastCheck MT is equipped with inspection software with a simple and intuitive interface design, and smooth operation without special training. The system can automatically generate structured professional inspection reports, with clear data and standardized formats, and key parameters and defect status at a glance. Let every test be well documented, providing a reliable basis for quality traceability and process optimization.

A	B	C	D	E	F	G	H	I	J	K	L	M	N	O	P	Q	R	S
Measure Report																		
FastCheck-MT		MT24																
Dimension Technology Co.,Ltd.																		
PASS																		
Product ID		3																
Description		Test																
Measure Task		Multi-Fiber-SM-RL-45 Type																
Produced by		Dimension																
Test Time		2025/12/23 16:05:31																
Operator		Operator																

## Parameter performance

Type	Parameter
Field of view	5.2mm×2.5mm
Defect size detection	0.8um
Effective resolution	1.6um
Magnification	0.95um/px or 200x
Focus	auto
Measurement time(Focusing time not included)	2.1 sec for MT12
	2.5 sec for MT16
	2.6 sec for MT24
Light source	royal blue LED, 465nm
Camera type	digital, USB3.0
Sensor type	monochrome, 5472 x 3648, 1"CMOS
Live image	19.2fps full resolution
Power source	DC 24V
Dimensions (L × W × H )	286mm × 101mm × 86mm
Weight	2.7kg
Operating temperature	-10 to +40℃

## Related Products



Offsoon Pro



MT Pro



Multifiber IRL Meter



AutoGet MT

**Dimension Technology Co.,Ltd**

Tel: +86 755-26480850

Email: sales@dimension-tech.com

Web: www.dimension-tech.com